

MILLENIUM PARK, WEST ROXBURY, MA

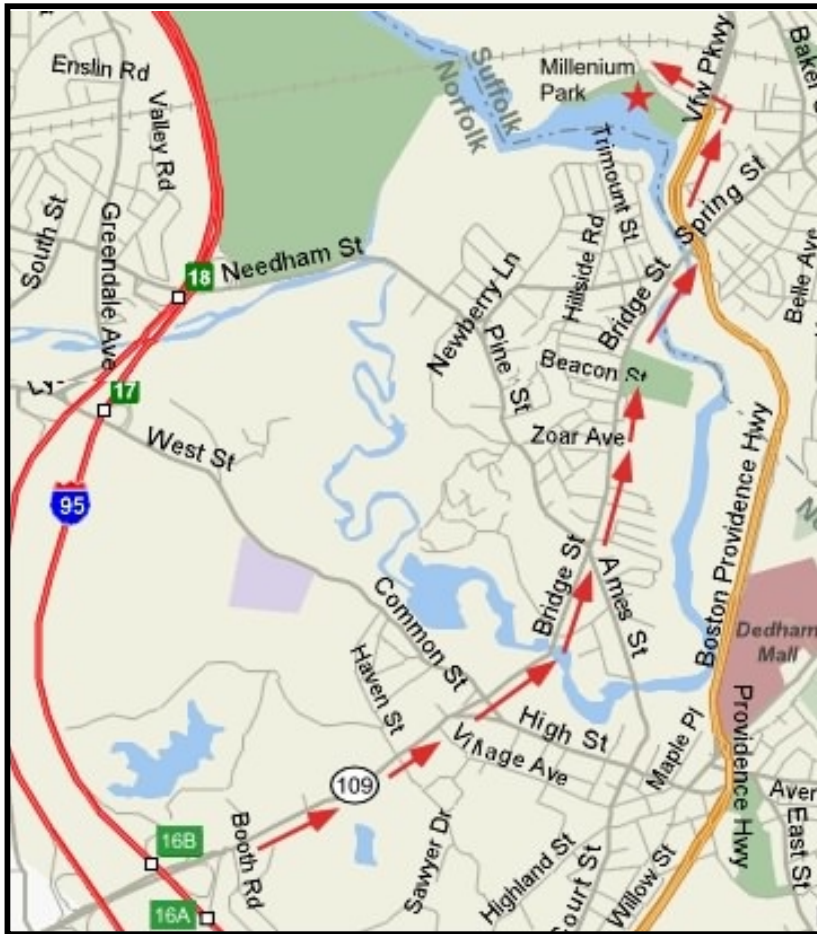
Directions: From North or South take Rt. 95 to exit 16A EAST, local Rt. 109 EAST.

Travel about 2.3 miles to the intersection of Rt. 109 and VFW Parkway. Landmark is the Irish Ale House on the right and the sign "Entering Boston" on the left. Diagonally across the intersection is the West Roxbury VA Medical Center.

Turn left onto VFW Parkway. At the second set of lights (about one block) turn left onto Charles Park Rd.
Landmark is the Spring Blossom restaurant.

The sign for the entrance into Millennium Park will be on your left.

After the turn continue straight to a stop sign. (Home Depot on the right). You will see the park straight in front of you.



Facilities: Porta-Johns, Free parking, short walk to Home Depot

Access: Open dawn until dusk, Free parking.

Flying Area: The site of the former Gardner Street landfill and the current home to the Boston Area Sport Kite Championships (BASKC). Now a beautiful grass covered park This huge 350 acre park is 220 feet above sea level with unobstructed breezes in all directions, easy access and ample parking.

Comments: There are tiers of fields for soccer and baseball. Usually lots of competition for turf with local teams. Upper fields get smooth winds and great views north towards Boston.